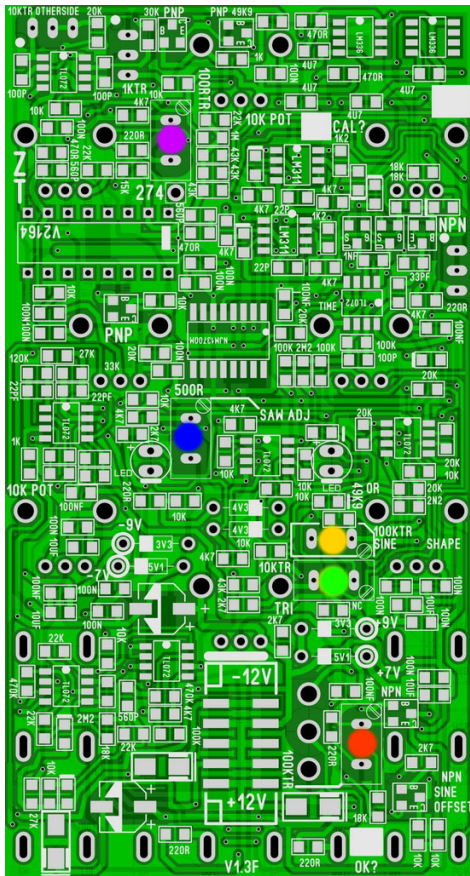


Front Panel Trimmers

Top aqua color trimmers: Low frequency and High frequency 1v per octave adjustment.

Red Trimmer: this adjusts the Zero through sweep so that both negative and positive knob land on the same frequency or note. Clockwise should match Counter clockwise for the Z thru knob. The trimmer adjusts the positive side.



PCB Trimmers

Purple trimmer adjusts the Reference voltage for the tracking. Use the '274' hole to measure with a volt meter: 274mV.

Blue trimmer adjusts the saw wave shape

Yellow trimmer adjusts the sine wave roundness

Red Trimmer adjusts the sine wave offset

Green Trimmer adjusts the Triangle offset.